

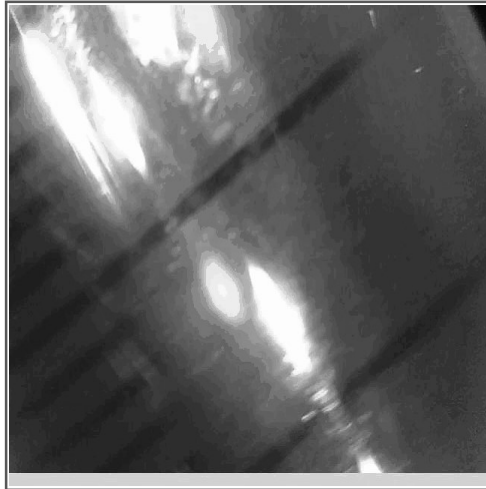
Catalina Hills / Venom
2046 W Ironwood Dr
Phoenix, AZ 85021
19289654611
Lic#: 00000016DCCC00020807

Sample: S308070-01
CC ID#: 2308C4L0063.2470
Lot#: N/A
Batch#: DIPIN0816
Batch Size: N/A

FINAL

Sample Name: Pineapple Tangie Distillate-S
Strain Name: Pineapple Tangie
Matrix: Concentrates Extracts

Sample Received: 08/16/2023
Report Created: 08/22/2023



Potency Results

81.6%	<LOQ%	RATIO	
Total THC	Total CBD	1	0
		THC	CBD

Total THC= THCa * 0.877 + d9-THC
Total CBD= CBDa * 0.877 + CBD

SAFETY

Microbials	Residual Solvents	Mycotoxins	Pesticides	Metals
PASS	PASS	PASS	PASS	PASS

Catalina Hills / Venom

2046 W Ironwood Dr
Phoenix, AZ 85021
19289654611
Lic#: 00000016DCCC00020807

Sample: S308070-01

CC ID#: 2308C4L0063.2470
Lot#: N/A
Batch#: DIPIN0816
Batch Size: N/A

FINAL

Sample Name: Pineapple Tangie Distillate-S

Strain Name: Pineapple Tangie

Matrix: Concentrates Extracts

Sample Received: 08/16/2023

Report Created: 08/22/2023

Cannabinoids by HPLC-DAD - Compliance

Date Analyzed: 08/17/2023 Analyst Initials: DRF

Analyte	LOQ	Mass	Mass	Q
	%	%	mg/g	
THCA	1.57	<LOQ	< LOQ	
d9-THC	1.57	81.6	816	
d8-THC	1.57	<LOQ	< LOQ	
CBDa	1.57	<LOQ	< LOQ	
CBD	1.57	<LOQ	< LOQ	M1
CBG	1.57	2.59	25.9	
CBN	1.57	<LOQ	< LOQ	
CBC	1.57	1.61	16.1	
Sum of Cannabinoids	1.57	85.8	858	Q3
Total THC	1.57	81.6	816	
Total CBD	1.57	<LOQ	< LOQ	

Total THC= THCa * 0.877 + d9-THC. Total CBD= CBDa * 0.877 + CBD.

LOQ = Limit of Quantitation; NR = Not Reported; ND = Not Detected.

Unless otherwise stated all quality control samples performed within specifications established by the Laboratory.

Cannabinoids method: HPLC-DAD.

Catalina Hills / Venom

2046 W Ironwood Dr
Phoenix, AZ 85021
19289654611
Lic#: 00000016DCCC00020807

Sample: S308070-01

CC ID#: 2308C4L0063.2470
Lot#: N/A
Batch#: DIPIN0816
Batch Size: N/A

FINAL

Sample Name: Pineapple Tangie Distillate-S

Strain Name: Pineapple Tangie

Matrix: Concentrates Extracts

Sample Received: 08/16/2023

Report Created: 08/22/2023

Pesticides by LC/MS/MS - Compliance

Pass

Date Analyzed: 08/18/2023 Analyst Initials: JCB

Analyte	LOQ	Limit	Units	Q	Status	Analyte	LOQ	Limit	Units	Q	Status
	ppm	ppm	ppm				ppm	ppm	ppm		
Abamectin	0.117	0.5	<LOQ	R1, V1	Pass	Hexythiazox	0.244	1.0	<LOQ	M2	Pass
Acephate	0.098	0.4	<LOQ		Pass	Imazalil	0.098	0.2	<LOQ		Pass
Acetaminocyl	0.488	2.0	<LOQ	M1	Pass	Imidacloprid	0.098	0.4	<LOQ		Pass
Acetamiprid	0.049	0.2	<LOQ		Pass	Kresoxim-methyl	0.098	0.4	<LOQ		Pass
Aldicarb	0.098	0.4	<LOQ		Pass	Malathion	0.049	0.2	<LOQ		Pass
Azoxystrobin	0.049	0.2	<LOQ		Pass	Metalaxyl	0.098	0.2	<LOQ		Pass
Bifenazate	0.049	0.2	<LOQ	M1	Pass	Methiocarb	0.049	0.2	<LOQ		Pass
Bifenthrin	0.049	0.2	<LOQ		Pass	Methomyl	0.098	0.4	<LOQ		Pass
Boscalid	0.098	0.4	<LOQ	M2	Pass	Myclobutanil	0.049	0.2	<LOQ	L1, V1	Pass
Carbaryl	0.049	0.2	<LOQ		Pass	Naled	0.122	0.5	<LOQ		Pass
Carbofuran	0.049	0.2	<LOQ		Pass	Oxamyl	0.244	1.0	<LOQ		Pass
Chlorantraniliprole	0.049	0.2	<LOQ	V1	Pass	Paclobutrazol	0.098	0.4	<LOQ	L1, V1	Pass
Chlorfenapyr	0.488	1.0	<LOQ	M2	Pass	Permethrins	0.049	0.2	<LOQ	M1	Pass
Chlorpyrifos	0.049	0.2	<LOQ		Pass	Phosmet	0.049	0.2	<LOQ		Pass
Clofentezine	0.049	0.2	<LOQ		Pass	Piperonyl butoxide	0.488	2.0	<LOQ		Pass
Cyfluthrin	0.488	1.0	<LOQ	V1	Pass	Prallethrin	0.098	0.2	<LOQ	V1	Pass
Cypermethrin	0.244	1.0	<LOQ		Pass	Propiconazole	0.098	0.4	<LOQ	V1	Pass
Daminozide	0.488	1.0	<LOQ		Pass	Propoxur	0.049	0.2	<LOQ	M2	Pass
Diazinon	0.049	0.2	<LOQ		Pass	Pyrethrins	0.314	1.0	<LOQ	M1	Pass
Dichlorvos	0.049	0.1	<LOQ		Pass	Pyridaben	0.049	0.2	<LOQ		Pass
Dimethoate	0.049	0.2	<LOQ		Pass	Spinosad	0.049	0.2	<LOQ		Pass
Ethoprophos	0.049	0.2	<LOQ		Pass	Spiromesifen	0.049	0.2	<LOQ		Pass
Etofenprox	0.098	0.4	<LOQ		Pass	Spirotetramat	0.049	0.2	<LOQ	V1	Pass
Etoxazole	0.049	0.2	<LOQ		Pass	Spiroxamine	0.098	0.4	<LOQ		Pass
Fenoxycarb	0.049	0.2	<LOQ		Pass	Tebuconazole	0.098	0.4	<LOQ	L1, V1	Pass
Fenpyroximate	0.098	0.4	<LOQ	V1	Pass	Thiacloprid	0.049	0.2	<LOQ		Pass
Fipronil	0.098	0.4	<LOQ	L1, V1	Pass	Thiamethoxam	0.049	0.2	<LOQ		Pass
Flonicamid	0.244	1.0	<LOQ		Pass	Trifloxystrobin	0.049	0.2	<LOQ	M2	Pass
Fludioxonil	0.098	0.4	<LOQ	M2	Pass						

LOQ = Limit of Quantitation; NR = Not Reported; ND = Not Detected. Unless otherwise stated all quality control samples performed within specifications established by the Laboratory. Pesticides method: LC/MS/MS.

Catalina Hills / Venom

2046 W Ironwood Dr
Phoenix, AZ 85021
19289654611
Lic#: 00000016DCCC00020807

Sample: S308070-01

CC ID#: 2308C4L0063.2470
Lot#: N/A
Batch#: DIPIN0816
Batch Size: N/A

FINAL

Sample Name: Pineapple Tangie Distillate-S

Strain Name: Pineapple Tangie

Matrix: Concentrates Extracts

Sample Received: 08/16/2023

Report Created: 08/22/2023

Metals by ICP-MS - Compliance

Pass

Date Analyzed: 08/18/2023 Analyst Initials: SML

Analyte	LOQ	Limit	Mass	Q	Status
	ppm	ppm	ppm		
Arsenic	0.098	0.405	<LOQ		Pass
Cadmium	0.098	0.405	<LOQ		Pass
Lead	0.392	1.05	<LOQ		Pass
Mercury	0.392	1.25	<LOQ		Pass

LOQ = Limit of Quantitation; ND = Not Detected. Unless otherwise stated all quality control samples performed within specifications established by the Laboratory.

Mycotoxins by ELISA- Compliance

Pass

Date Analyzed: 08/17/2023 Analyst Initials: KAM

Analyte	LOQ	Limit	Mass	Q	Status
	ppb	ppb	ppb		
Aflatoxins Total	2.00	20	3.04		Pass
Ochratoxin A	4.00	20	<LOQ		Pass

LOQ = Limit of Quantitation; NR = Not Reported; ND = Not Detected. Unless otherwise stated all quality control samples performed within specifications established by the Laboratory. Total Aflatoxins includes Aflatoxins B1, B2, G1, and G2.

Catalina Hills / Venom
2046 W Ironwood Dr
Phoenix, AZ 85021
19289654611
Lic#: 00000016DCCC00020807

Sample: S308070-01
CC ID#: 2308C4L0063.2470
Lot#: N/A
Batch#: DIPIN0816
Batch Size: N/A

FINAL

Sample Name: Pineapple Tangie Distillate-S
Strain Name: Pineapple Tangie
Matrix: Concentrates Extracts

Sample Received: 08/16/2023
Report Created: 08/22/2023

Microbials

Pass

E. coli by 3M Petrifilm- Compliance Plate

Date Analyzed: 08/18/2023 Analyst Initials: KAM

Analyte	LOQ	Limit	Result	Q	Status
	CFU/g	CFU/g	CFU/g		
E. coli	10	100	<10		Pass

Unless otherwise stated all quality control samples performed within specifications established by the Laboratory. Aspergillus includes species flavus, fumigatus, niger, and terreus. Salmonella and Aspergillus by Medicinal Genomics.

Aspergillus and Salmonella by qPCR - Compliance qPCR

Date Analyzed: 08/18/2023 Analyst Initials: KAM

Analyte	Result	Q	Status
	in one gram		
Salmonella spp.	Not Detected		Pass
Aspergillus	Not Detected		Pass

Unless otherwise stated all quality control samples performed within specifications established by the Laboratory. Aspergillus includes species flavus, fumigatus, niger, and terreus. Salmonella and Aspergillus by Medicinal Genomics.



Jillian Blaney
Technical Laboratory Director

Catalina Hills / Venom

2046 W Ironwood Dr
Phoenix, AZ 85021
19289654611
Lic#: 00000016DCCC00020807

Sample: S308070-01

CC ID#: 2308C4L0063.2470
Lot#: N/A
Batch#: DIPIN0816
Batch Size: N/A

FINAL

Sample Name: Pineapple Tangie Distillate-S

Strain Name: Pineapple Tangie

Matrix: Concentrates Extracts

Sample Received: 08/16/2023

Report Created: 08/22/2023

Residual Solvents by Headspace GC/MS - Compliance

Pass

Date Analyzed: 08/18/2023 Analyst Initials: SML

Analyte	LOQ	Limit	Units	Q	Status	Analyte	LOQ	Limit	Units	Q	Status
	ppm	ppm	ppm				ppm	ppm	ppm		
Acetone	105	1000	<LOQ		Pass	2-methylpentane/2,	67.5		<LOQ		
Acetonitrile	42.2	410	<LOQ		Pass	3-dimethylbutane					
Benzene	0.844	2	<LOQ		Pass	2-Propanol (IPA)	527	5000	<LOQ		Pass
Butanes	527	5000	<LOQ		Pass	Isopropyl acetate	527	5000	<LOQ		Pass
n-Butane	527		<LOQ			Methanol	316	3000	<LOQ		Pass
iso-Butane	527		<LOQ			Pentanes	527	5000	<LOQ		Pass
Chloroform	12.7	60	<LOQ		Pass	n-Pentane	527		<LOQ		
Dichloromethane	63.3	600	<LOQ		Pass	iso-pentane	527		<LOQ		
Ethanol	527	5000	<LOQ		Pass	neo-Pentane	527		<LOQ		
Ethyl acetate	527	5000	<LOQ		Pass	Propane	527	5000	<LOQ		Pass
Diethyl Ether	527	5000	<LOQ		Pass	Toluene	97.0	890	<LOQ		Pass
n-Heptane	527	5000	<LOQ		Pass	Xylenes	232	2170	<LOQ		Pass
Hexanes	33.8	290	<LOQ		Pass	m/p-Xylene	464		<LOQ		
n-Hexane	33.8		<LOQ			o-Xylene	232		<LOQ		
3-Methylpentane	33.8		<LOQ			Ethyl benzene	232		<LOQ		
2,2-Dimethylbutane	33.8		<LOQ								

LOQ = Limit of Quantitation; ND = Not Detected;
Unless otherwise stated all quality control samples performed
within specifications established by the Laboratory.
Solvents method: GC/MS

Catalina Hills / Venom
2046 W Ironwood Dr
Phoenix, AZ 85021
19289654611
Lic#: 00000016DCCC00020807

Sample: S308070-01
CC ID#: 2308C4L0063.2470
Lot#: N/A
Batch#: DIPIN0816
Batch Size: N/A

FINAL

Sample Name: Pineapple Tangie Distillate-S
Strain Name: Pineapple Tangie
Matrix: Concentrates Extracts

Sample Received: 08/16/2023
Report Created: 08/22/2023

Notes and Definitions

Item	Definition
I1	Interference. Relative intensity of a characteristic ion in the sample analyte exceeded 30% of the relative intensity in the reference spectrum.
L1	The percent recovery of the LCS was above the control limit for the test but analyte was not detected above the Action Limit in Table 3.1.
M1	Matrix Spike recovery was higher than control limit but recovery of the LCS was within control limits.
M2	Matrix Spike recovery was lower than control limit but recovery of the LCS was within control limits.
Q3	Testing result is for informational purposes only and cannot be used to satisfy dispensary testing requirements in R9-17-317.01(A) or labeling requirements in R9-17-317. Testing result is not accredited under ISO 17025.
R1	The RPD for the LCS/LCSD pair exceeded 20% but recoveries were within control limits.
V1	CCV recovery exceeded control limits but the sample analyte concentration was below maximum allowable concentrations in table 3.1
ND	Analyte NOT DETECTED at or above the reporting limit.
RPD	Relative Percent Difference
%REC	Percent Recovery
Source	Sample that was matrix spiked or duplicated.



Jillian Blaney
Technical Laboratory Director